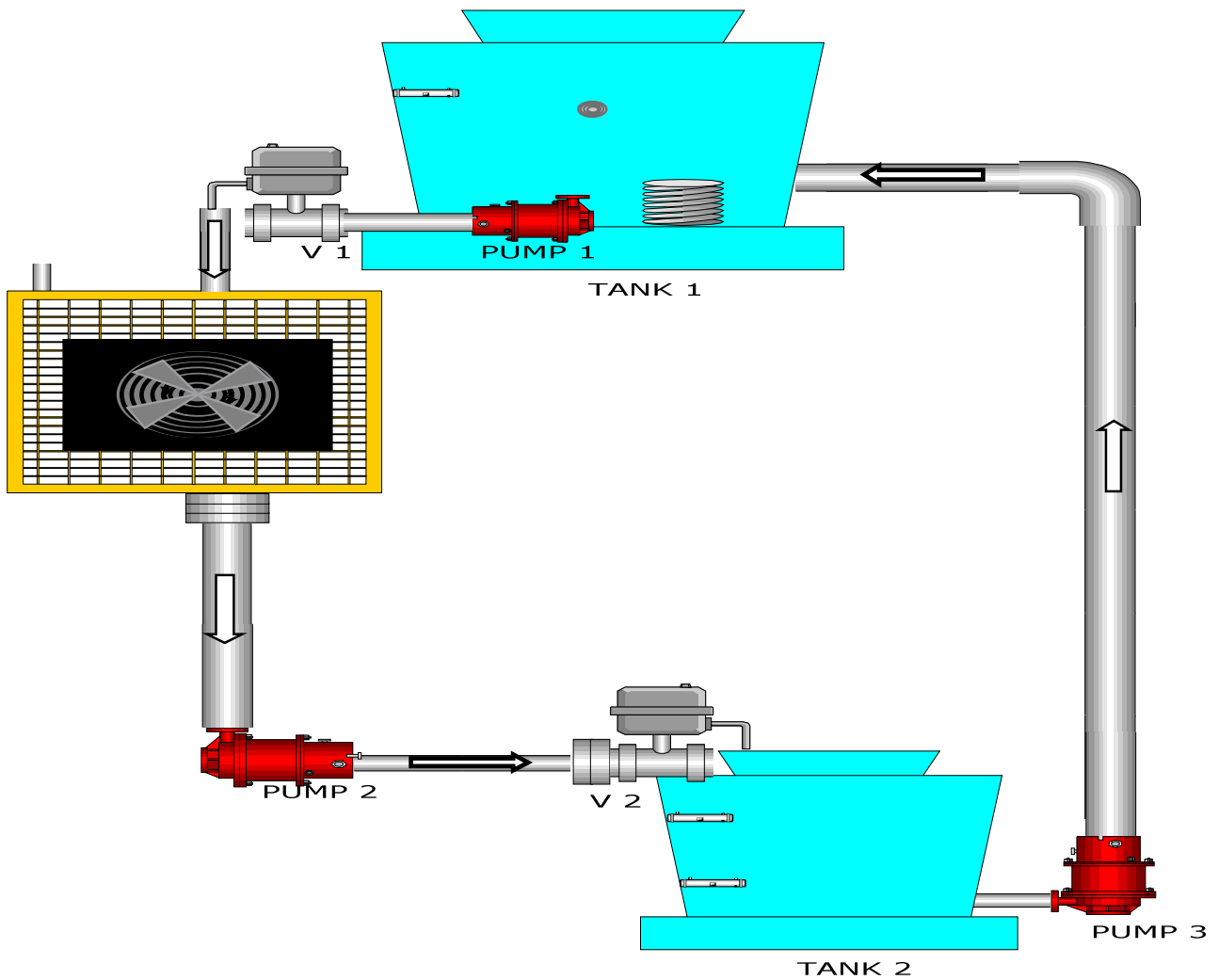
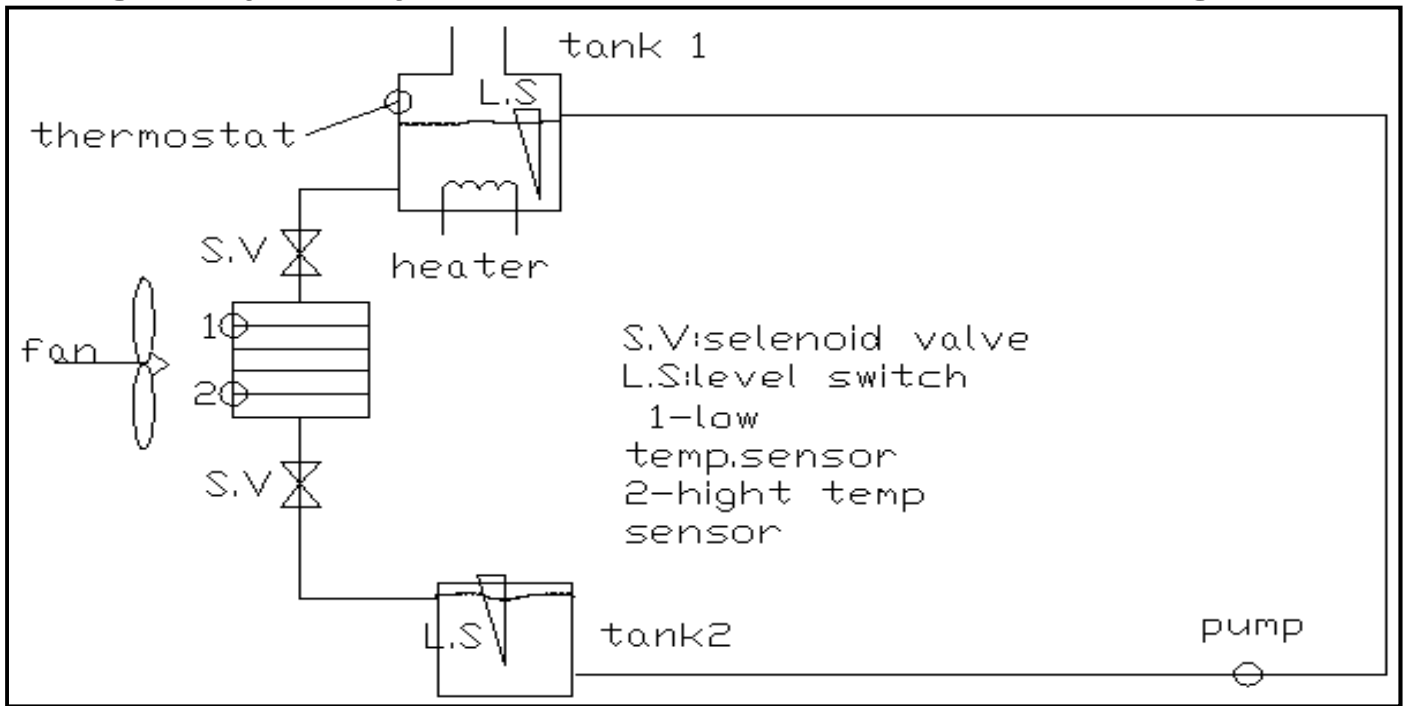
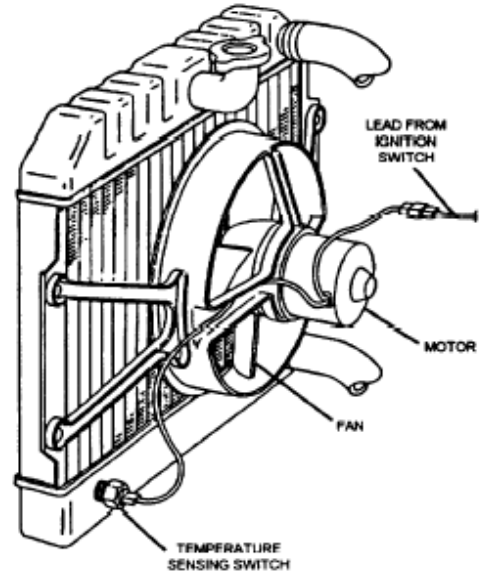
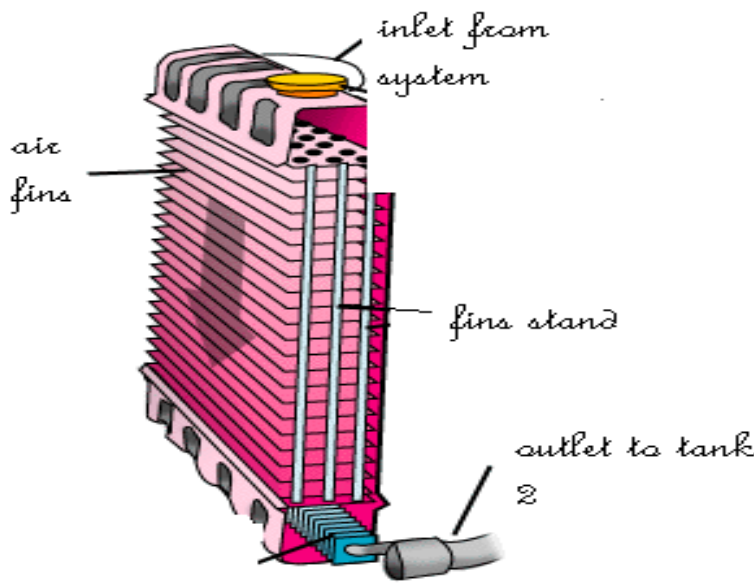


Design Project in year 2008/2009: PLC control of Mixing Process





RUN PAUSE STOP
BUILT-IN CNET
ON OFF
ROM MODE

High speed counter (P000~P007)
 1 phase 100kpps 2Ch, 10kpps 2Ch (Total 4Ch)
 2 phase 50kpps 1Ch, 20kpps 1Ch (Total 2Ch)

RS-485 (Ch No.1)
 Multi-drop communication
 Modbus communication

RS-232C (2 ports)
 Loader port: 2 (Rx), 3 (Tx), 5 (SG)
 Ch No.0: 4 (Rx), 7 (Tx), 5 (SG)

Positioning function (P040~P043)
 - 2 Axes (100kpps)

Input terminal

Extension terminal
 (Extension, RTC, Memory modules)

Output terminal

PID control (8 loops)