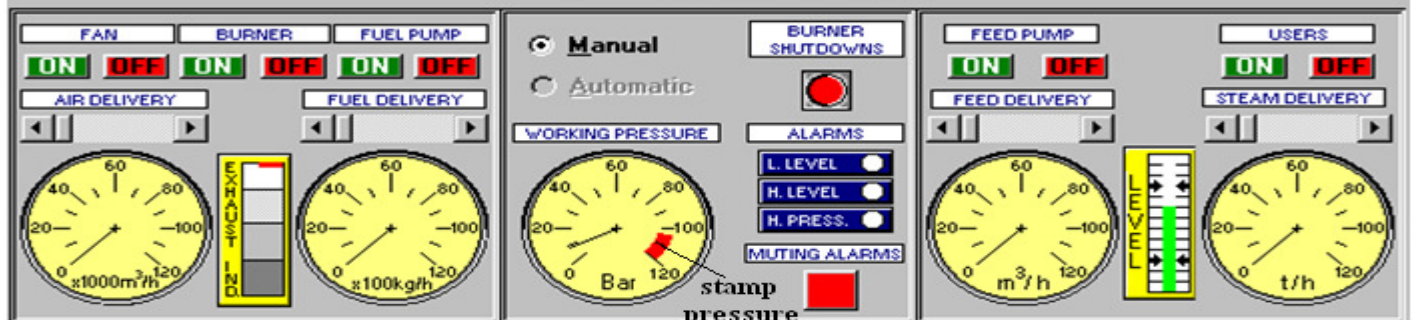
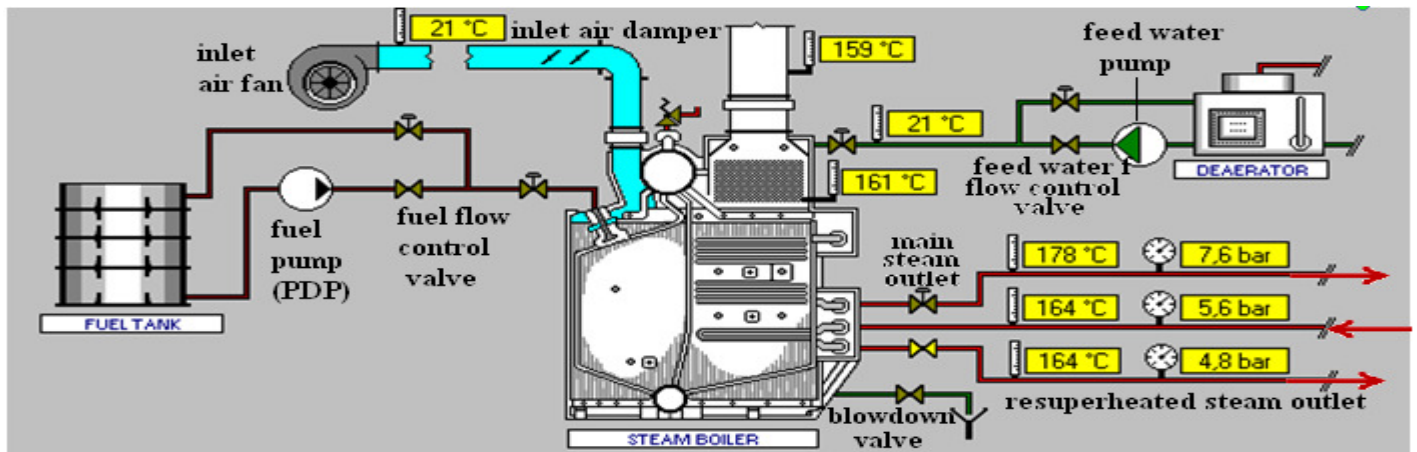
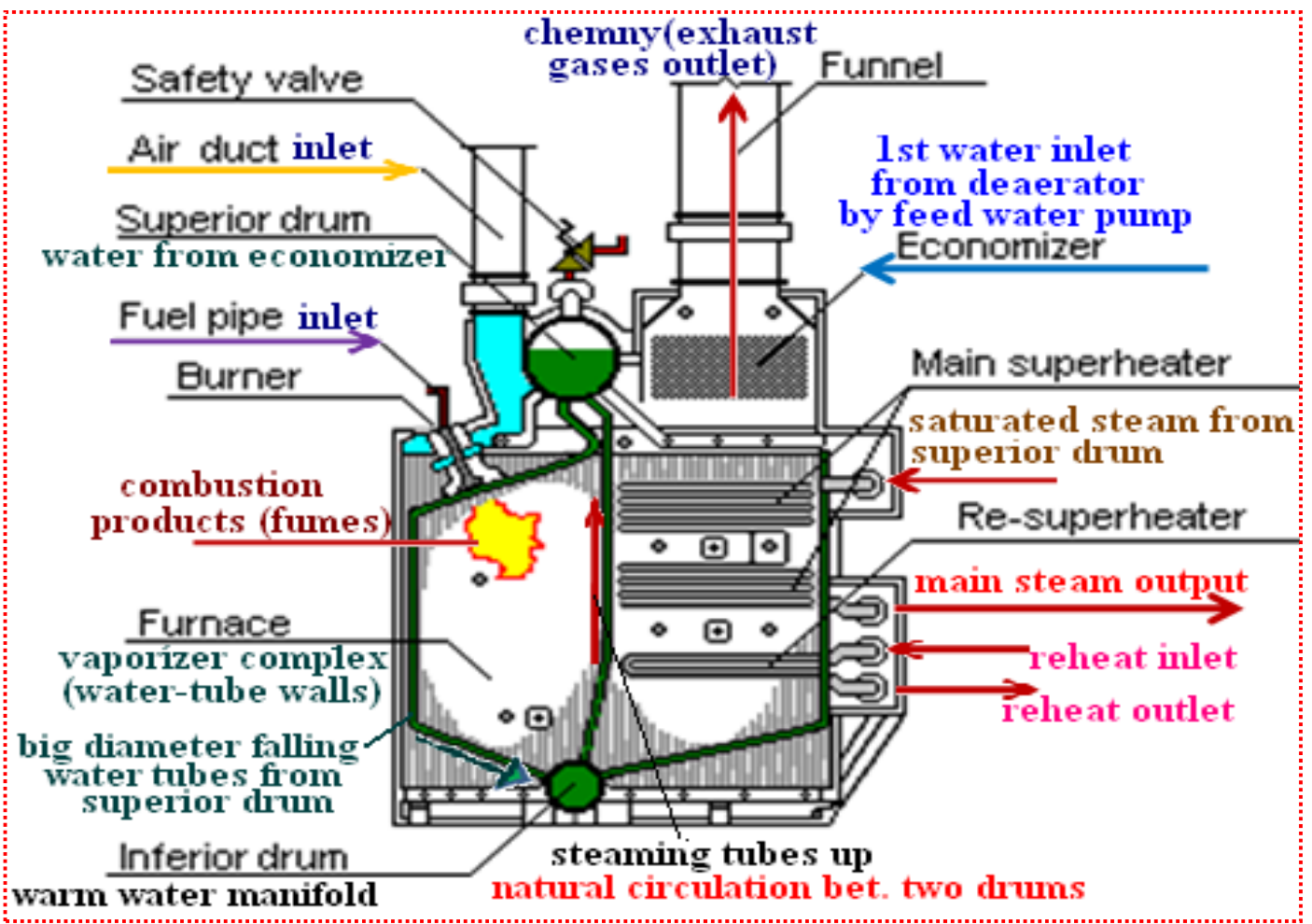
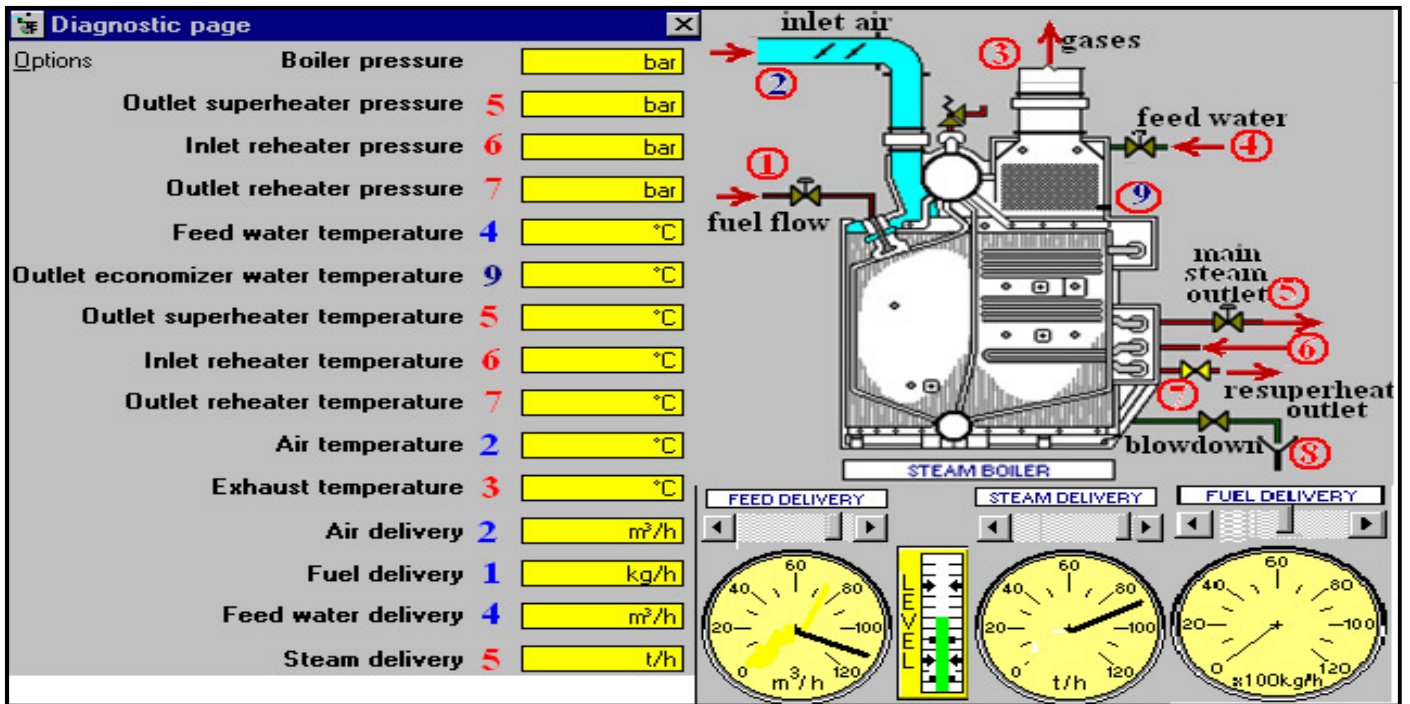


# Design Project in 2009/2010: Virtual Lab design of Water-Tube Boiler





### Boiler Thermal and Heat balance:

- Quantity of available heat in the fuel  $Q_d$ ;
- Quantity of heat used in the economizer  $Q_e$ ;
- Quantity of heat used in the generator tubes  $Q_g$ ;
- Quantity of heat used in the superheater  $Q_s$ ;
- Quantity of heat used in the re-superheater  $Q_{rs}$ ;
- Quantity of heat lost in the funnel for fumes  $Q_f$ ;
- Quantity of heat lost for radiation and unburned  $Q_i$ .

